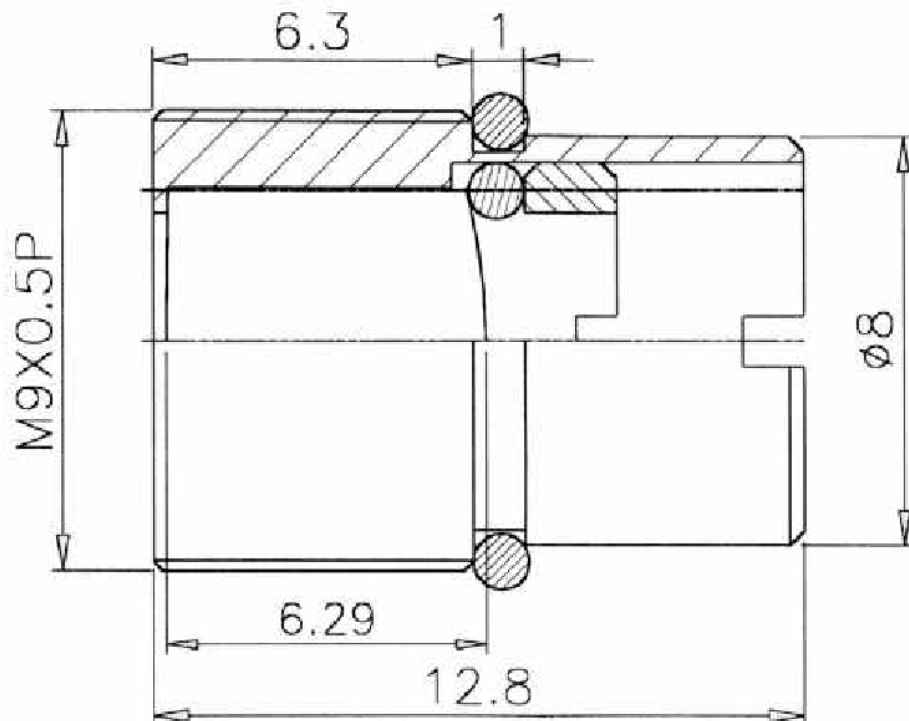


Specification

Laser diode collimator
Glass material
3-element glass lens, AR coated
Eff. Focus length : 8 mm
N.A. : 0.3
F/# : 1/1.6
Spot size @10m : 20mm
Wavelength : $670 \pm 10\text{nm}$
Dimension : M9 × 0.5P, Length : 12.8mm
Divergence : 2mrad, Exit pupil : 5mm

Drawings



Lanics Co., Ltd.

Room #703, 7F Woolim e-Biz Center
170-5, Guro-dong, Guro-gu, Seoul, 152-050, Korea
TEL : +82-2-2108-2255 FAX : +82-2-2108-2260
E-mail : support@lanics.com
[http:// www.lanics.com](http://www.lanics.com)